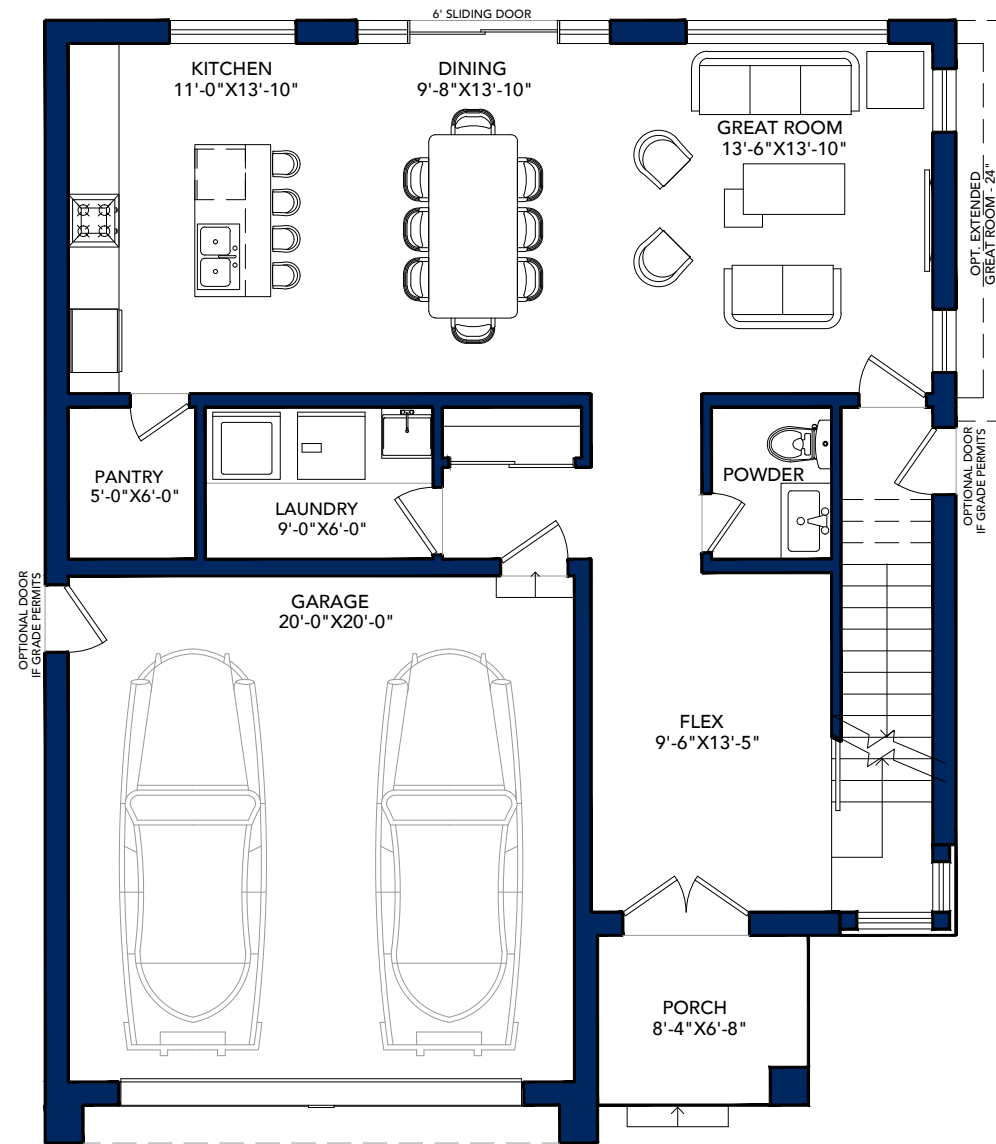
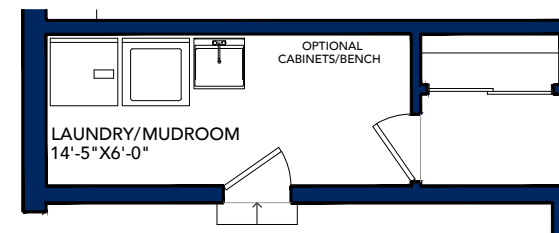


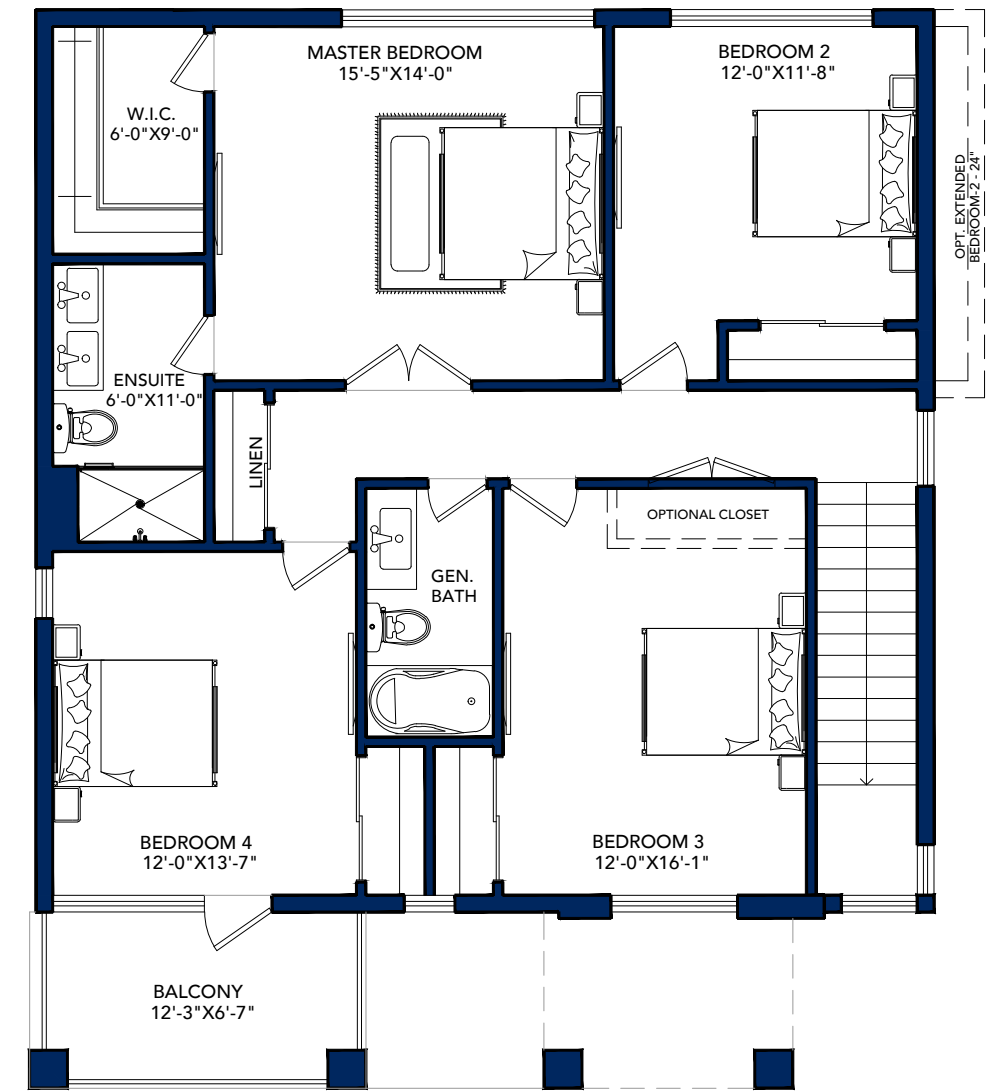
OPTIONAL FINISHED
BASEMENT FLOOR AREA = 977 SQ.FT.
INCLUDING STAIR



FIRST FLOOR AREA = 952 SQ.FT.
TOTAL AREA = 2220 SQ.FT.



OPTIONAL MUDROOM DESIGN



SECOND FLOOR AREA = 1268 SQ.FT.
TOTAL AREA = 2220 SQ.FT.